
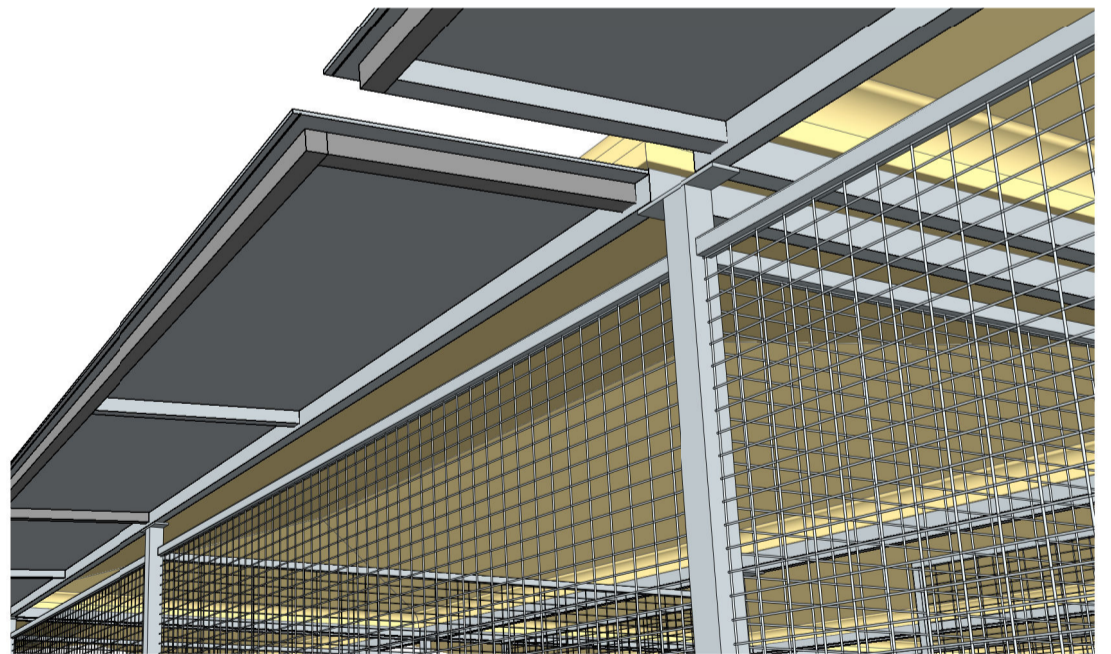


-  **Considerably Cooler**
-  **Minimal Maintenance**
-  **Minimal Corrosion**
-  **Longer Life Span**
-  **22% Larger Stables & Feed Rooms**
-  **Superior Appearance**
-  **Easy to Clean**



OPTIONAL AWNINGS




www.chameleonaustralia.com.au

**ROCKHAMPTON DRAFTING SERVICES**  
 David Mills  
 Lic. No.61700  
 Lic. under QBSA Act 1991  
 PHONE:-(07) 49267111 FAX:-(07) 49267122  
 199 HONOUR ST, NORTH ROCKHAMPTON

**CHAMELEON**   
 Research & Development (Australia) Pty Ltd

**HORSE STABLES**

This drawing shall not be reproduced in any manner and shall remain the property of Chameleon Research and Development (Australia) Pty Ltd

<b>DO NOT SCALE</b>		
ALL DIMENSIONS IN MILLIMETRES U.N.O.		
DATE:-	SCALE:- NTS	REV:- A
		PROJECT NUMBER
B.D.A.Q. MEMBER		